

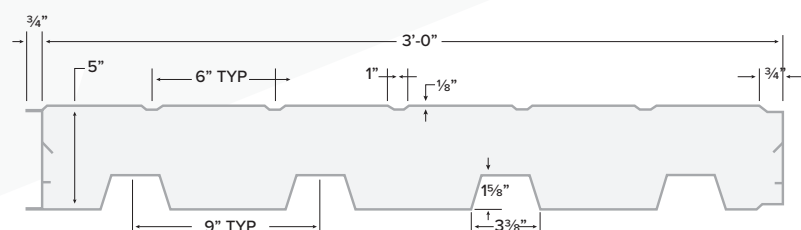
# home & cottage

PRODUCT BROCHURE

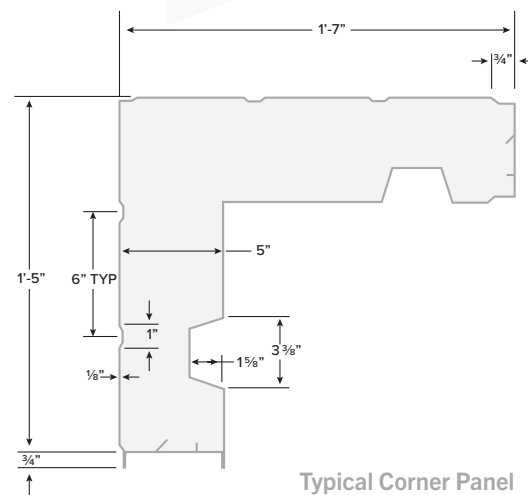


ARTspan®

Artspan® is leading the industry as a manufacturer of structural insulated steel panel products. We provide exceptional structural solutions for residential, commercial and industrial applications. We pride ourselves in offering exemplary service while providing high quality, innovative products to our customers.



Typical Panel



Typical Corner Panel

## TECHNICAL SPECS

Coverage Width - 36" (1,067mm)

Thickness - 5" (127mm)

Panel Lengths - 4' - 42' (1219mm to 12,801mm)

Foam Core - Polyisocyanurate (minimum density of 2.5 lbs/cu.ft)

Effective R-Value - 28.5 (tested in accordance with ASTM C518)

Exterior Face - 24 ga light corrugated pre-painted Grade 33 steel (conforms to ASTM A792), Z275 or AZM150 finish, embossed texture

Interior Face - 24ga deep corrugated pre-painted Grade 33 Steel (conforms to ASTM A792), Z972 or AZM150 finish

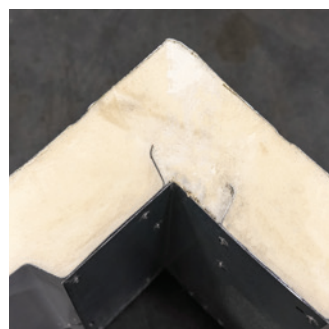
Weight - 9.94 lbs/lineal foot or 3.31 lbs/sq.ft.

Fire Rating Test Result - 51 minutes (CAN/ULC S101 test)

Flame Spread Rating (tested in accordance with CAN/ULC S102-10) - 10

Smoke Developed Classification (tested in accordance with CAN/ULC S102-10) 215

STC rating - 26 (tested according to ASTM E90 standard)



Portions of this product may be covered by one or more U.S. or Canadian patents and/or pending patent applications.



Platinum member

Artspan® is owned by WGI Westman Group Inc., a dynamic entrepreneurial group of companies that operate manufacturing, sales and distribution facilities in 29 centres across Canada and the United States while maintaining dealer networks and a worldwide customer base.

# ARTSPAN® STRUCTURAL INSULATED STEEL PANELS SET THE STANDARD OF EXCELLENCE. OUR PROPRIETARY AND INNOVATIVE PANELS PROVIDE FLOOR-TO-ROOF STRUCTURAL SOLUTIONS.



## DURABILITY

Panels are manufactured with a pre-finished inner and outer steel shell, providing a mold, fire and rodent resistant building envelope.

Our homes are engineered to provide structurally sound, long lasting housing solutions that can be passed along to the next generation.



## ASSEMBLY

Artspan® panels are pre-cut in the factory to the required lengths/pitch making your house project quick and easy to assemble.

An Artspan® wall or roof system combines up to seven steps associated with a traditional wall or roof system into two efficient steps.

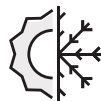


## VERSATILITY

Artspan® panels form floor, wall and roof system of your residential project. Our panel systems are compatible with a variety of foundations.

Artspan® roof systems allow for vaulted ceilings, providing an open, spacious feel.

Artspan® panels provide a finished exterior, eliminating the need for additional wall or roof cladding.



## COMFORT

Homes built with Artspan® panels are designed to keep you warm in the winter and cool in the summer.

The panels have an effective R-value of 28.5.

Foam-to-foam bonds on panel joints and a patented solid foam, one-piece corner provide exceptional building air tightness.







**ONE-PIECE CORNER**

**PRE-FINISHED  
STEEL EXTERIOR**

**MOLD AND FIRE  
RESISTANT**

**PRE-CUT  
STRUCTURAL  
PANELS**

**EXCEPTIONAL  
R-VALUE AND  
AIR TIGHTNESS**

# TRADITIONAL vs. ARTSPAN® PANELS

## MULTI-STEP CONSTRUCTION

The traditional approach to constructing a home consists of multiple steps, a number of trades and extended build time.

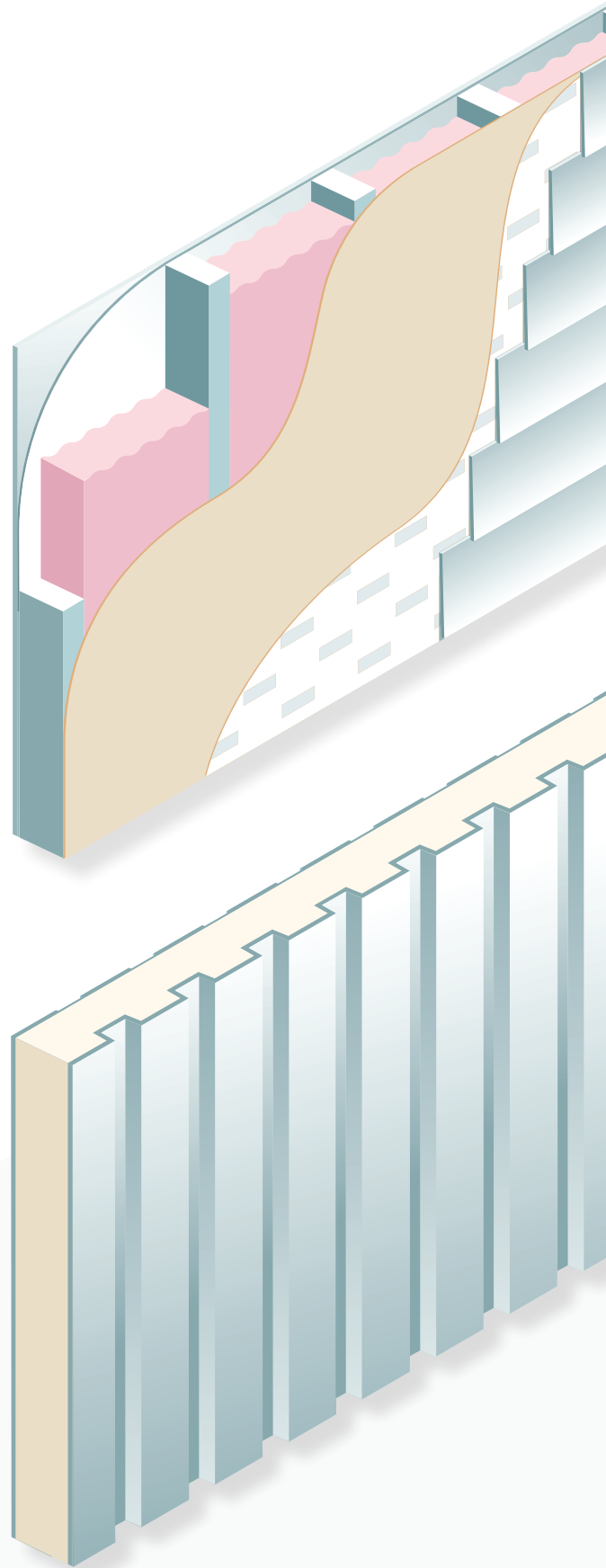
Traditional framing steps for a wood frame wall:

- Insulation
- Vapour barrier
- Framing
- Exterior sheathing
- Exterior house wrap
- Siding

## ONE-PASS CONSTRUCTION

Artspan® panels provide you with a better way to build. Save time and money by reducing the number of construction steps required.

Artspan® panels are pre-finished and provides everything a building envelope needs to be structurally sound and insulated.



# ARTSPAN® PANEL SYSTEMS CAN BE USED TO BUILD MANY HOUSING PROJECTS.



## Residential

Energy efficient panels keep you warm in the winter and cool in the summer.



## Cottages

Quick and easy-to-assemble cottage shell panel packages.



## Multi-Family

Durable, well insulated shell packages.



## Garages

Self-framing, do-it-yourself garage packages.



## Tiny Homes

Customizable, pre-cut tiny home shell packages.



## Northern & Remote Housing

Fire, mold and rodent resistant panels.

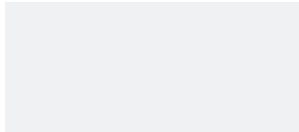




# SUMMIT STRUCTURAL INSULATED STEEL PANELS

## AVAILABLE COLOURS

### STANDARD EXTERIOR COLOURS



WHITE WHITE



STONE GREY



CHARCOAL



BUCKSKIN



DARK RED

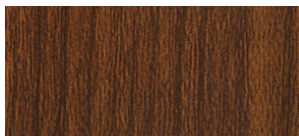


HERON BLUE



BLACK

### PREMIUM EXTERIOR COLOURS

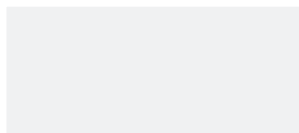


FRONTIER



ESPRESSO

### STANDARD INTERIOR COLOURS



WHITE WHITE



GALVALUME

### NOTES

Custom colours available upon request

Minimum order quantities may apply for premium colour selections

Colours may not appear exactly as shown - final colour selection should be made from a steel colour sample

Colour selection may be subject to availability.

Colour selection may affect pricing - confirm prior to ordering

